

Figure B
Floor Framing and Flooring

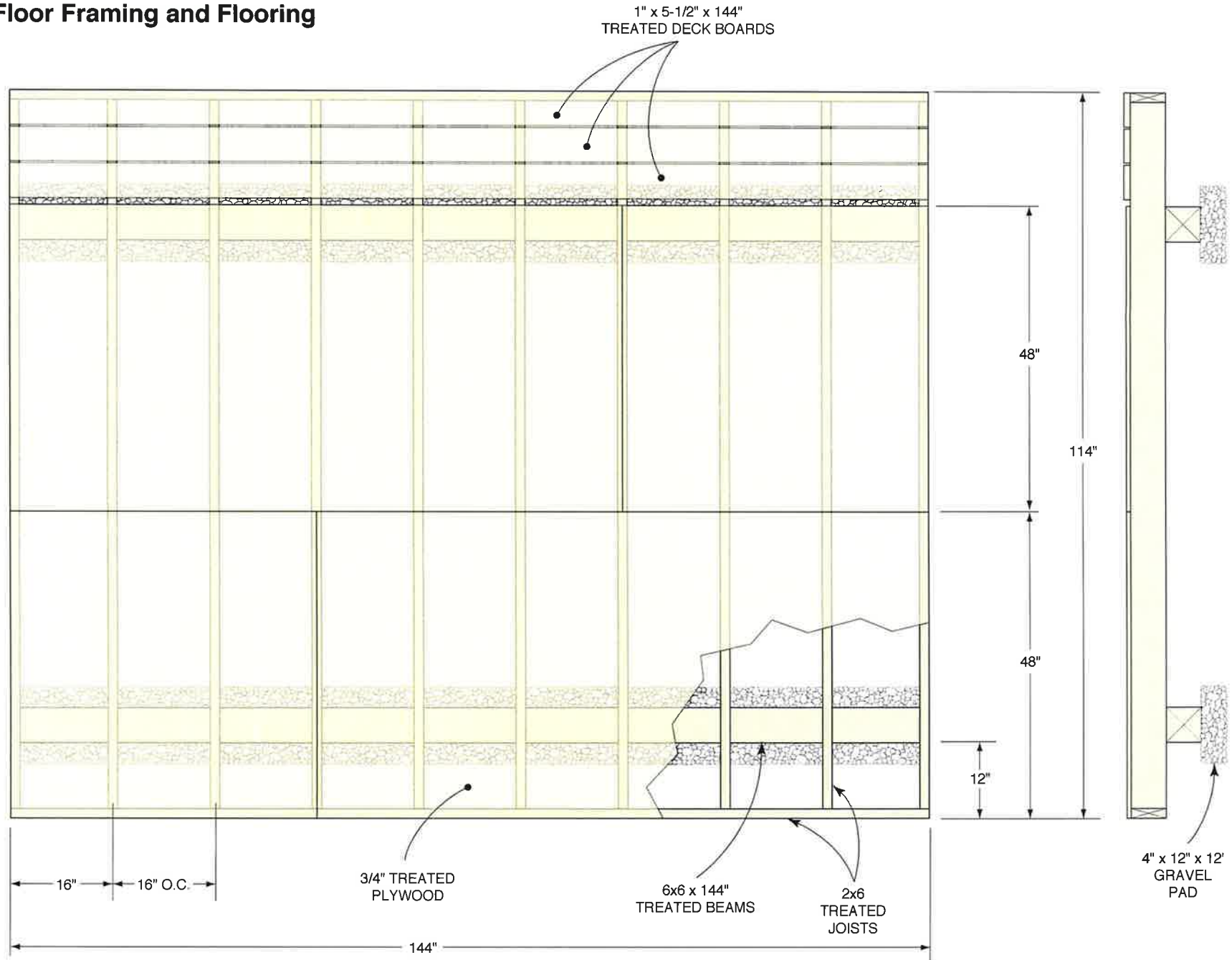


Figure C
Front Wall Framing and Siding

SCREENS ARE SHOWN HERE FOR POSITIONING ONLY.
 INSTALL AFTER RAFTERS AND PURLINS ARE
 ATTACHED TO WALL FRAMING.

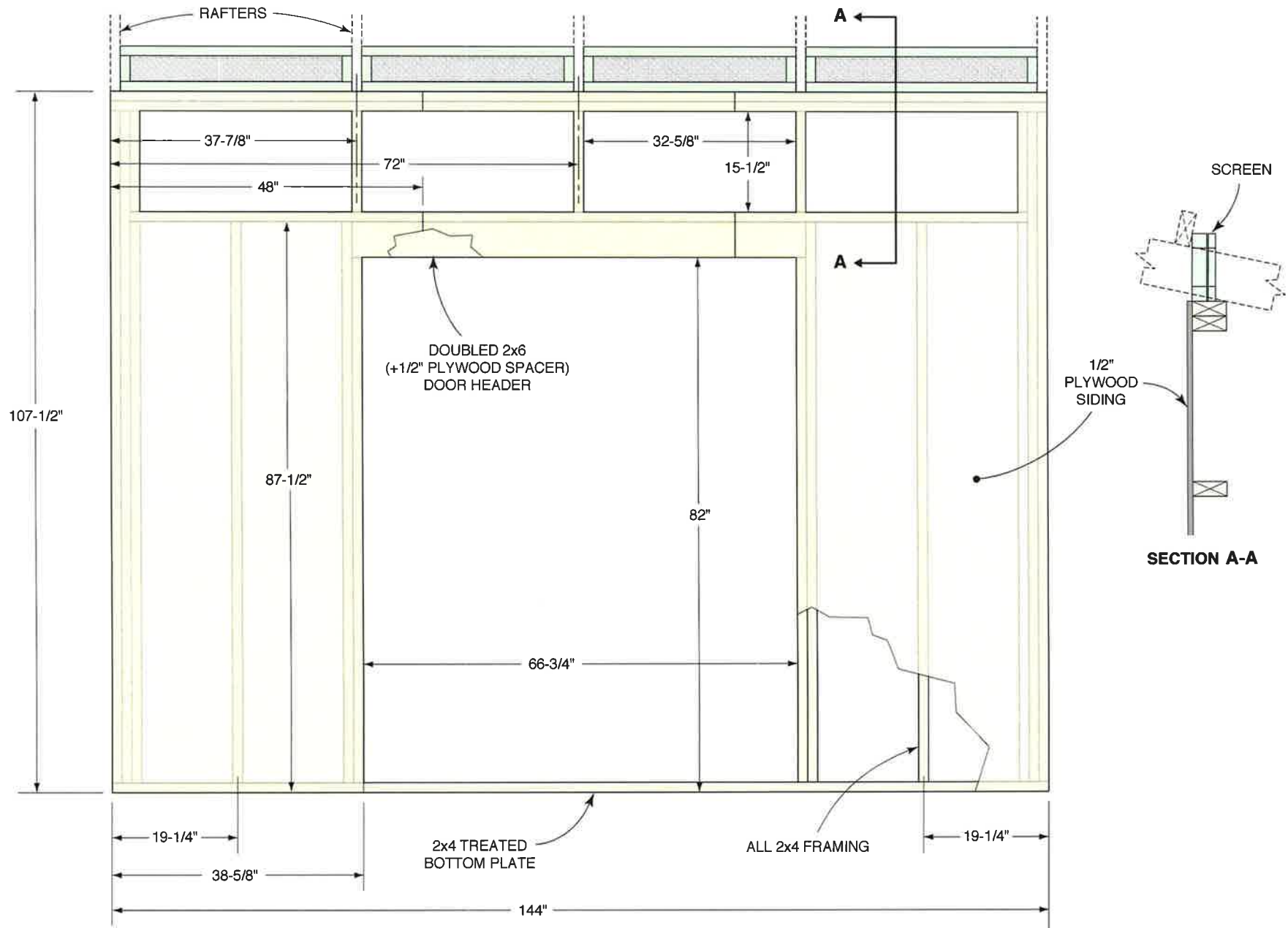


Figure D
Rear Wall Framing and Siding

SCREENS ARE SHOWN HERE FOR POSITIONING ONLY.
INSTALL AFTER RAFTERS AND PURLINS ARE
ATTACHED TO WALL FRAMING.

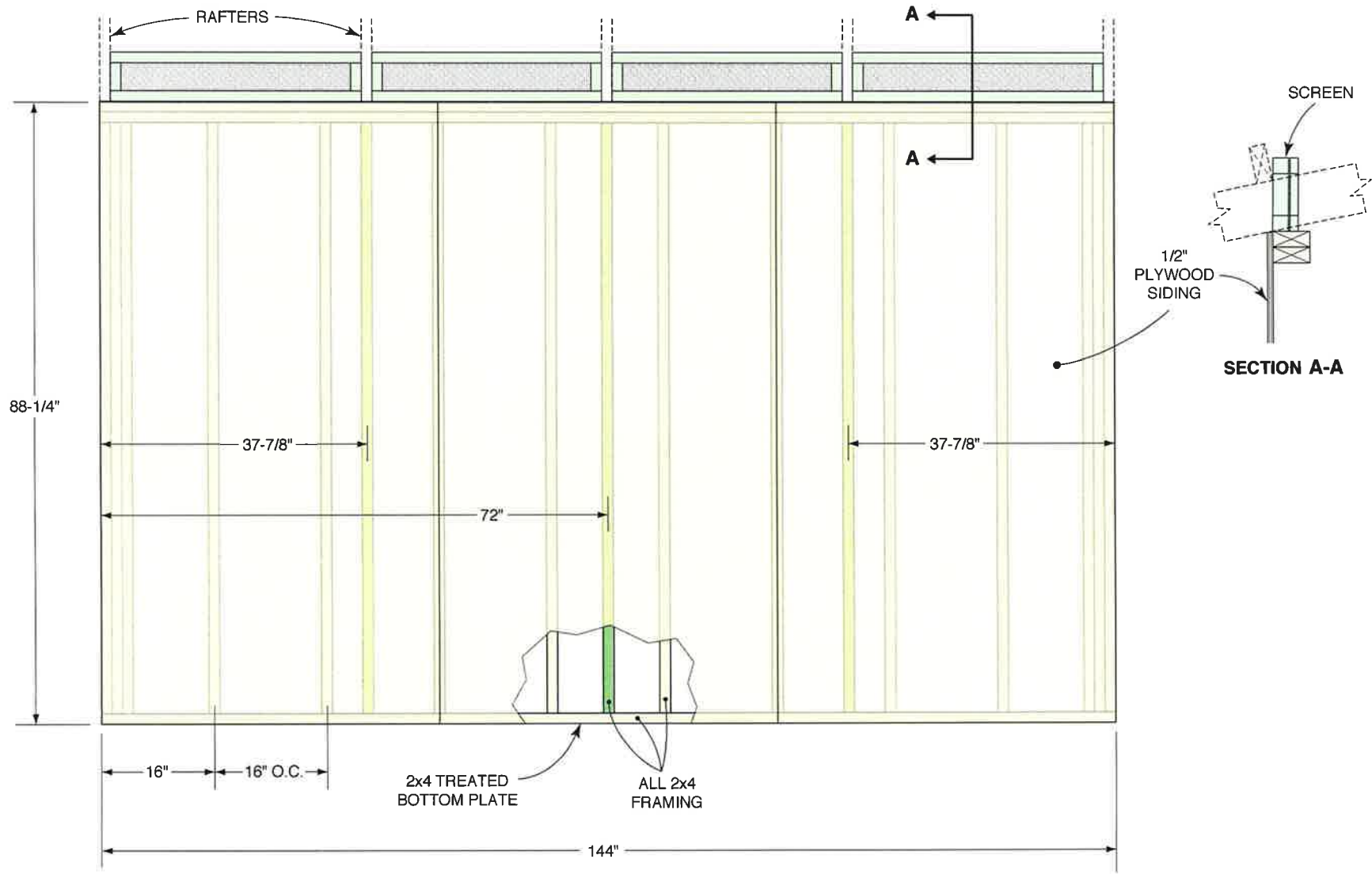


Figure E
Rafter and Purlin
Construction

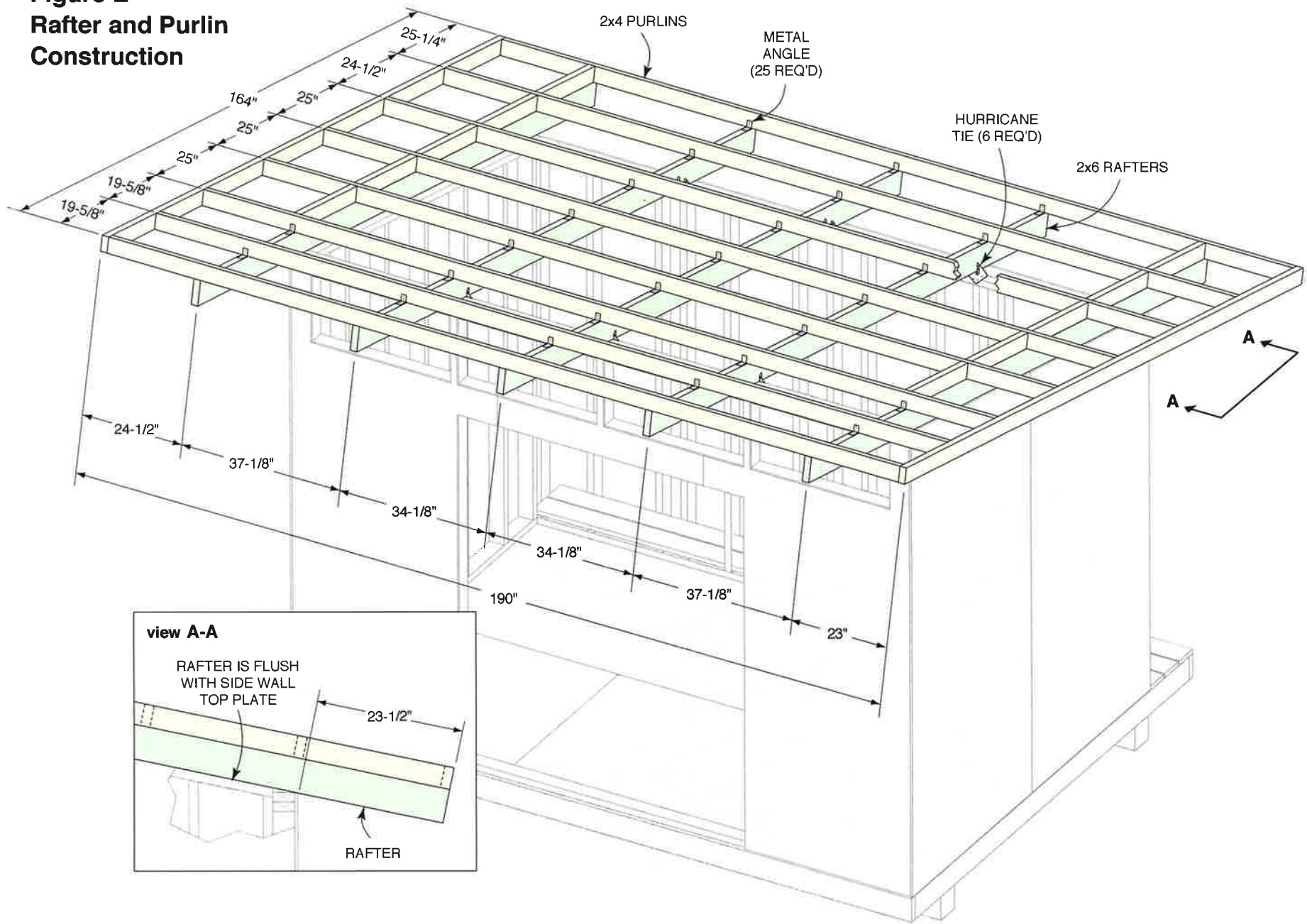
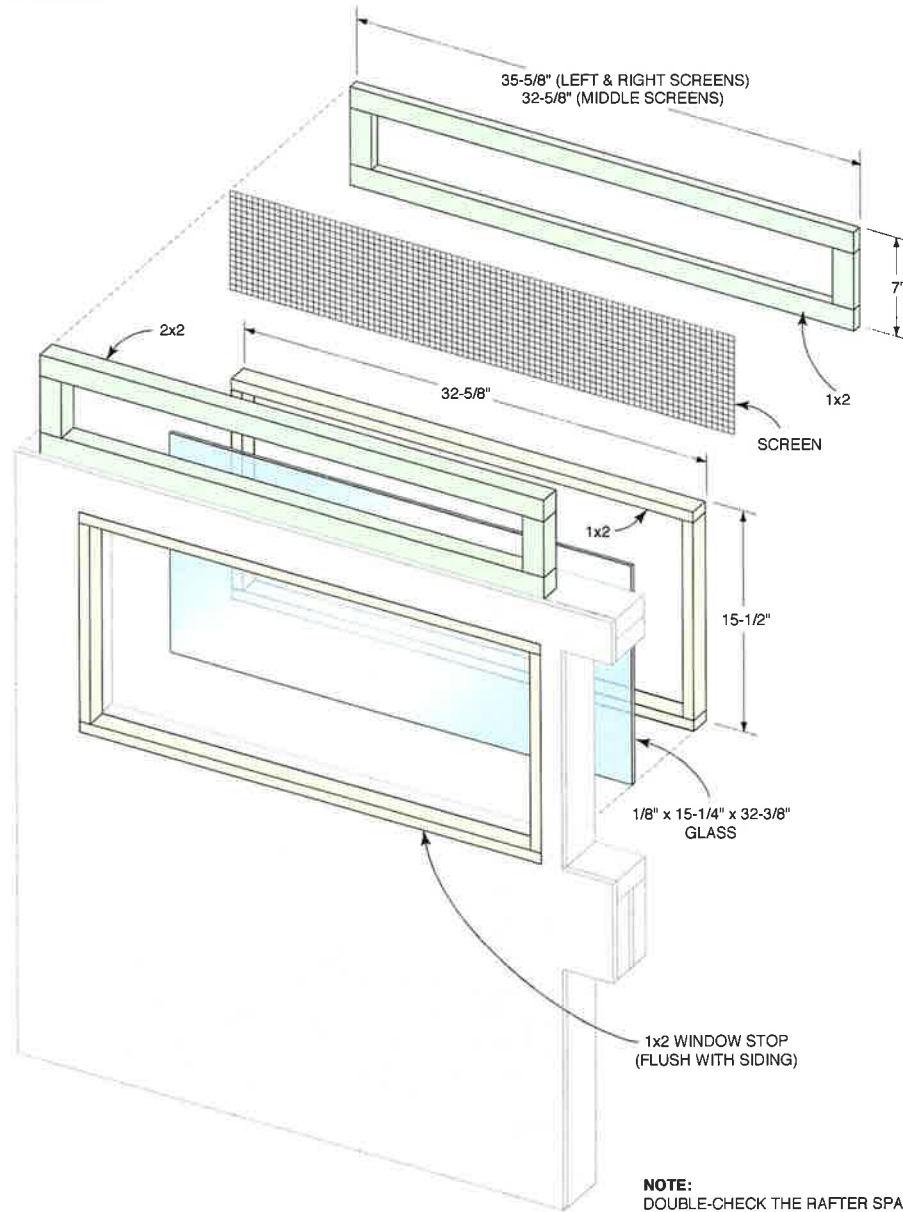


Figure G
Window and Screen
Construction



NOTE:
DOUBLE-CHECK THE RAFTER SPACINGS
AND THE ACTUAL WINDOW OPENINGS
BEFORE CUTTING PIECES FOR THE
SCREENS AND WINDOW ASSEMBLIES.

Figure H
Metal Roof
Installation

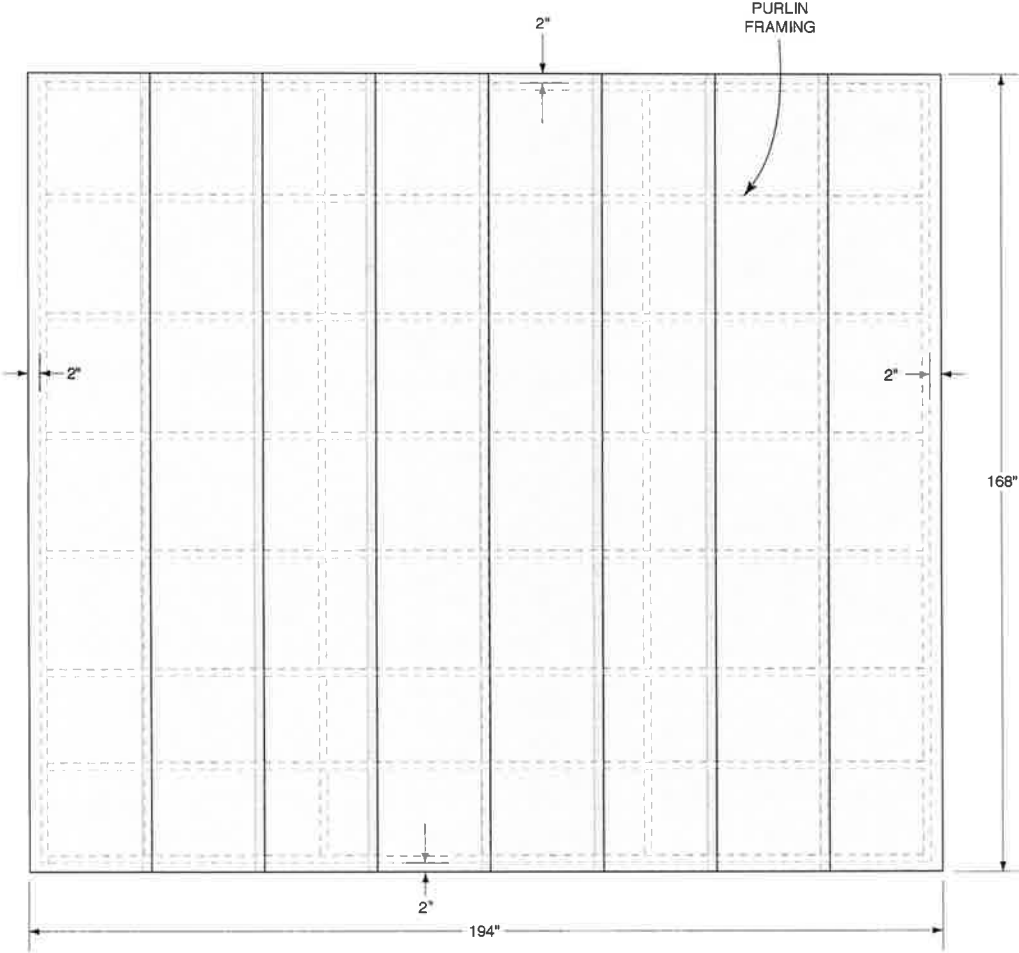
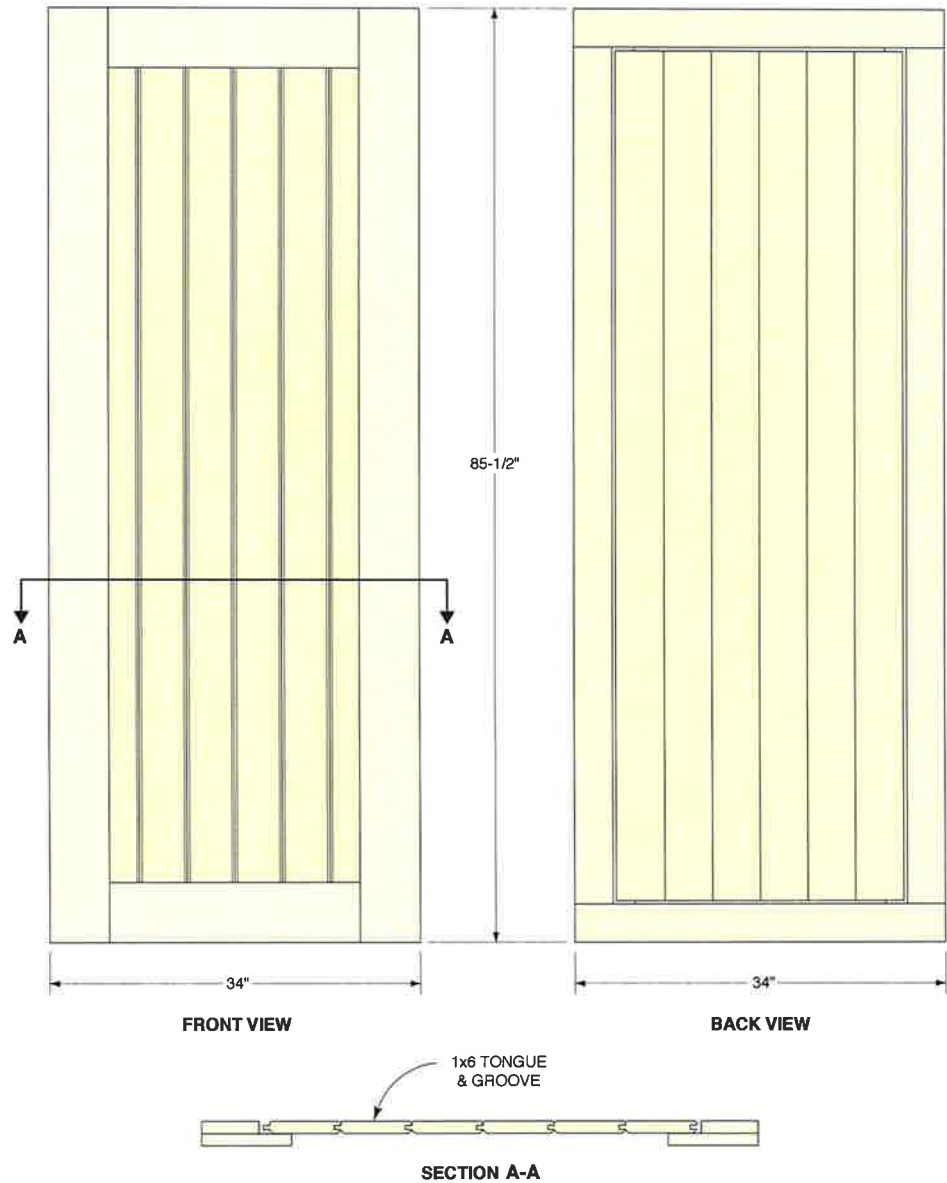


Figure J
Door Construction



NOTE:
ALL YELLOW PIECES ARE 1x6; ALL GREEN PIECES ARE 1x4. THE FRAME PIECES ARE POCKET-SCREWED TO FORM FRONT AND REAR FRAMES, WHICH ARE GLUED AS SHOWN. THE POCKET SCREWS ARE ON THE GLUED SIDES.

Figure K
Finishing Up
(Front)

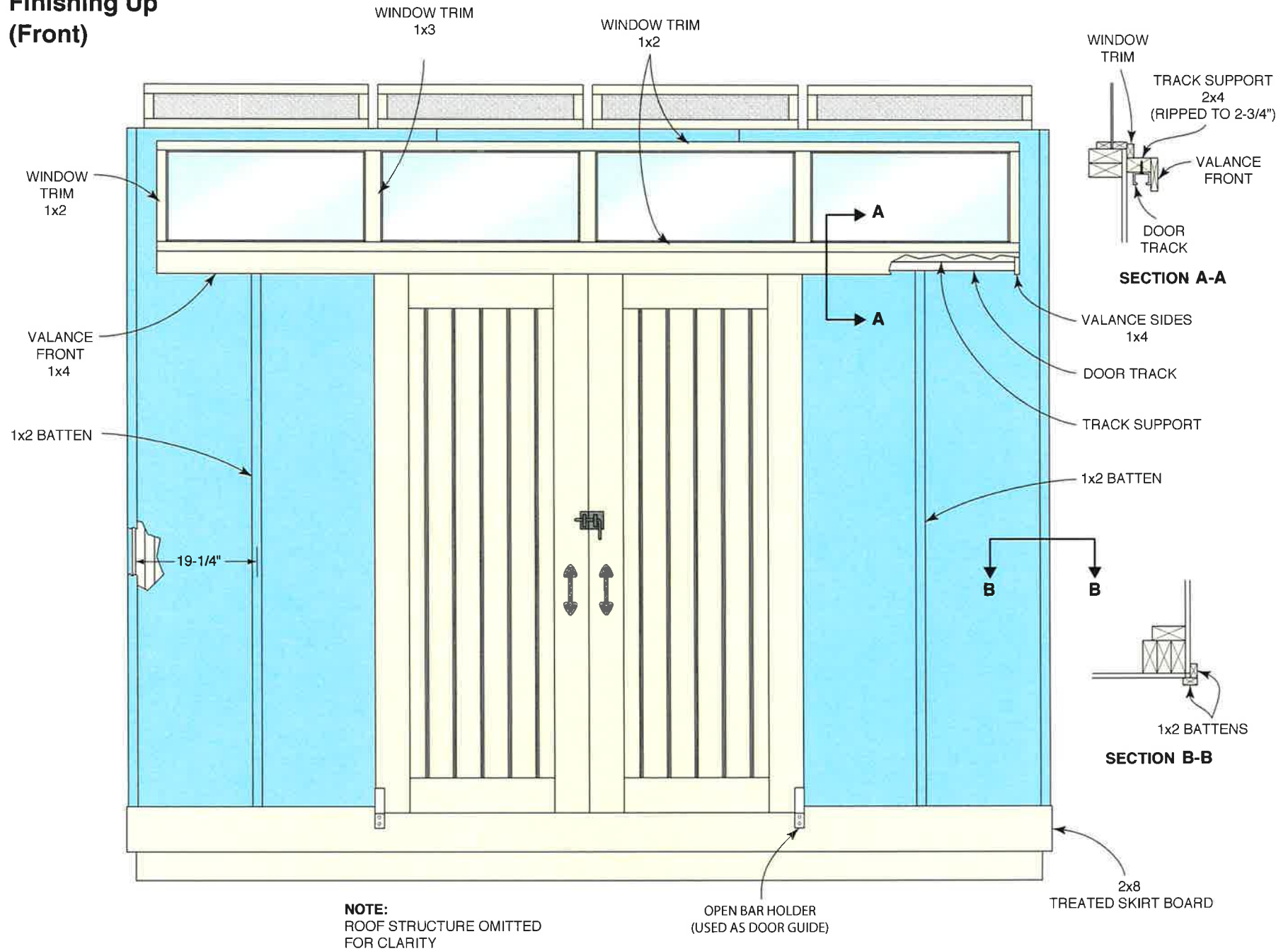
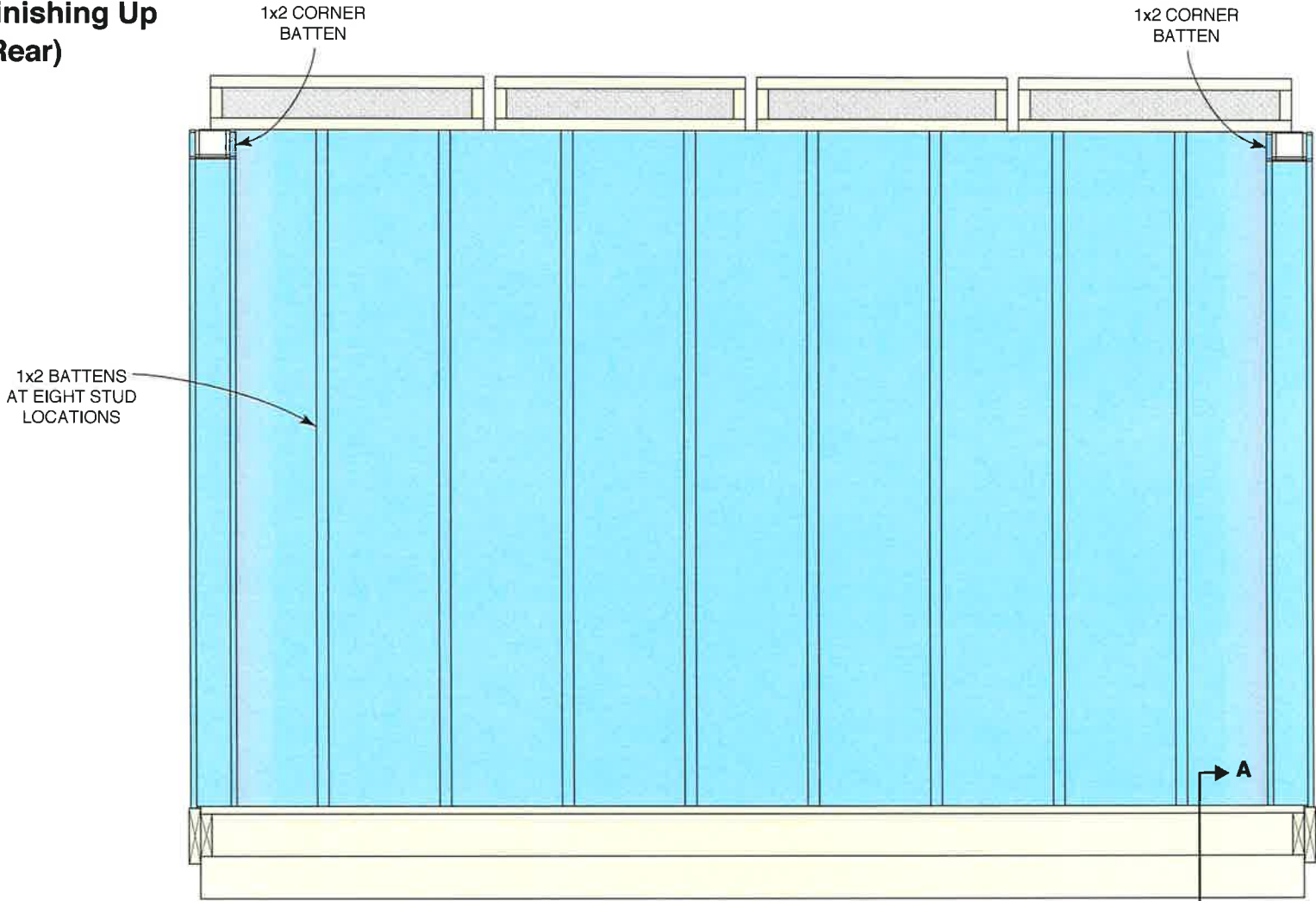
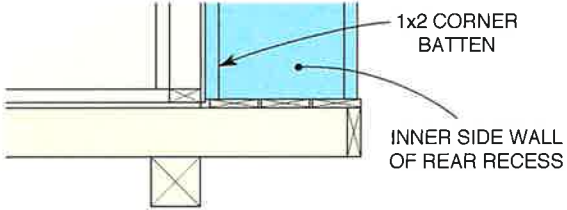


Figure L
Finishing Up
(Rear)



REAR VIEW



PARTIAL SECTION A-A

NOTE:
ROOF STRUCTURE OMITTED
FOR CLARITY.